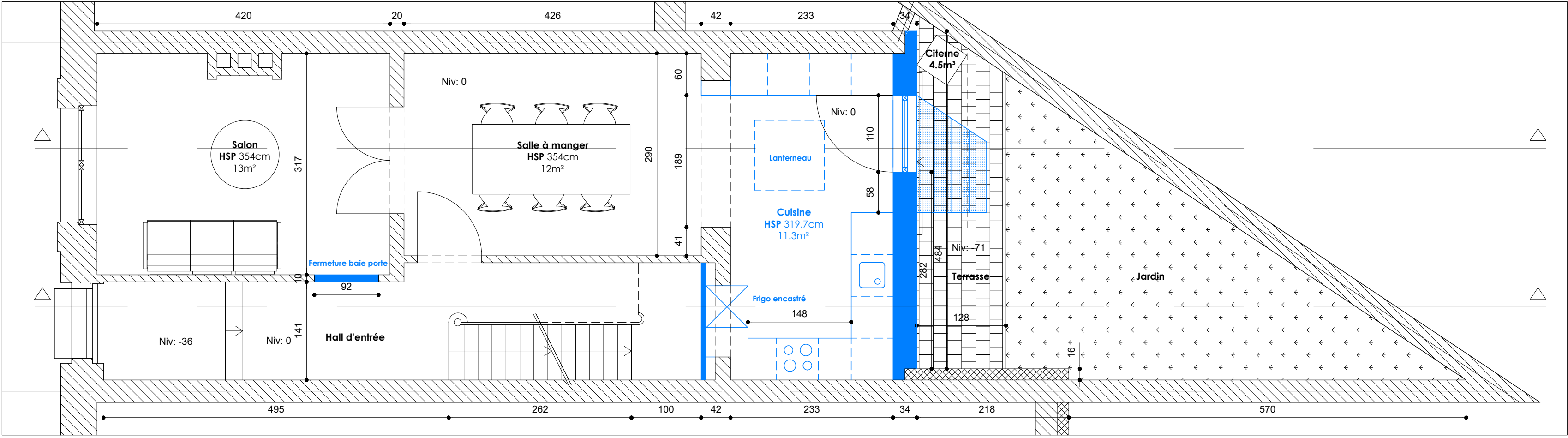
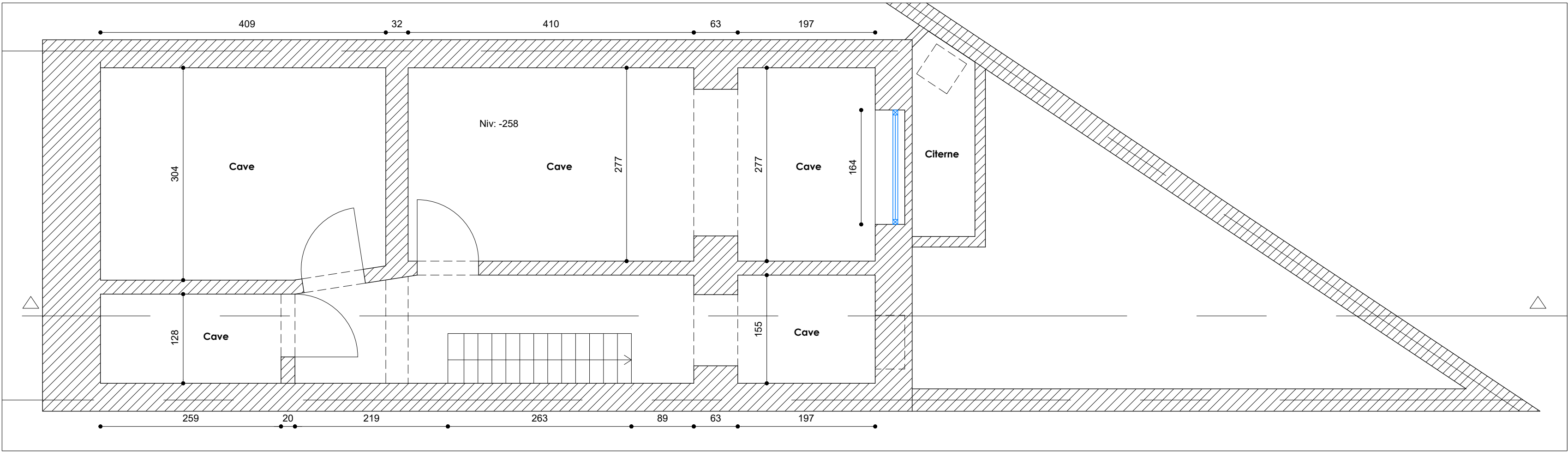


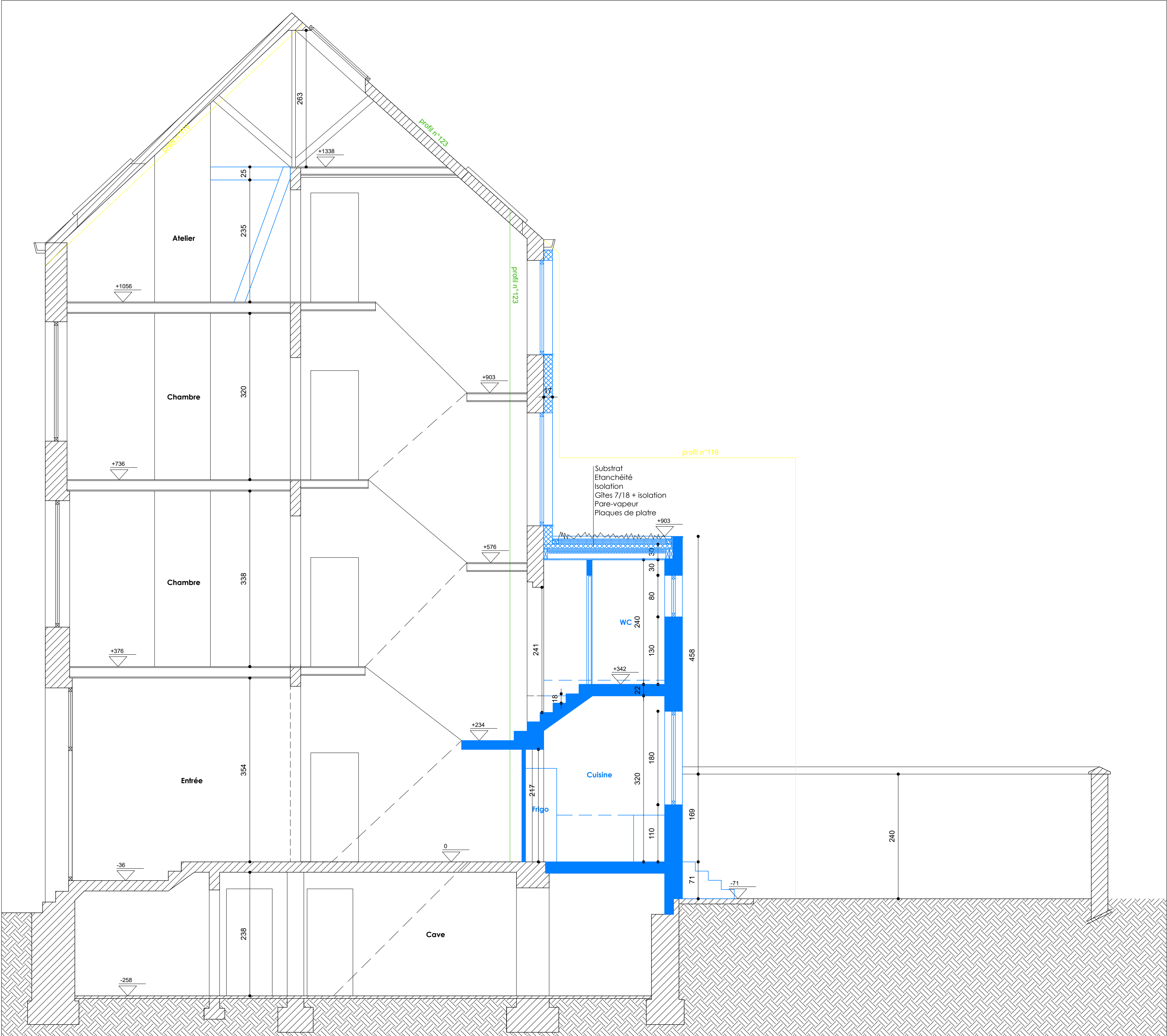
R+1



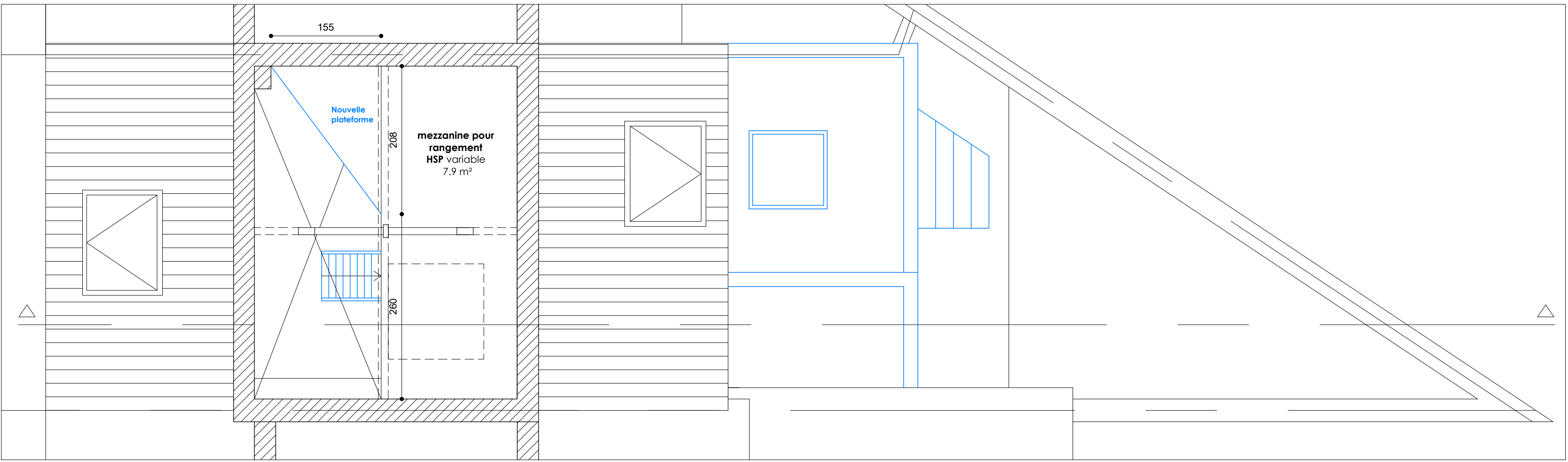
RDC



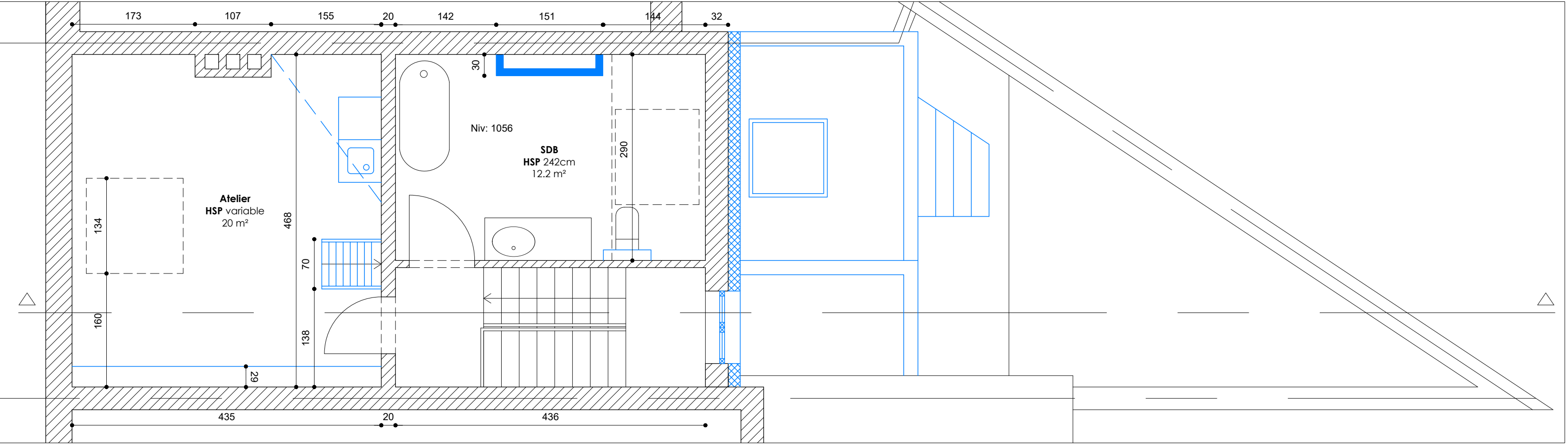
Cave



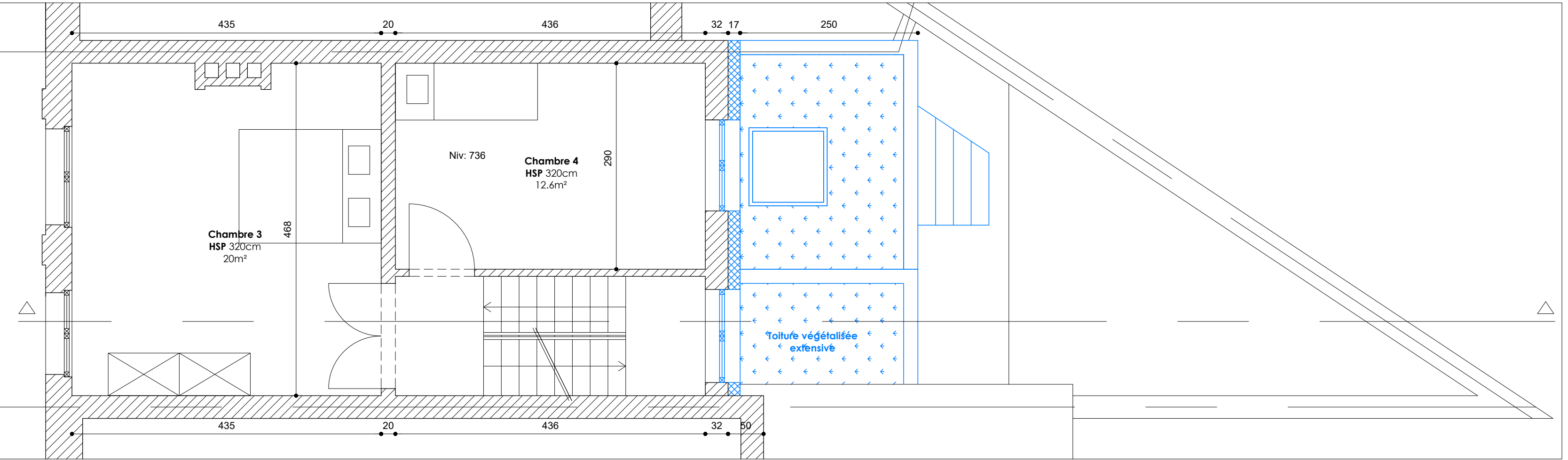
Coupe 1



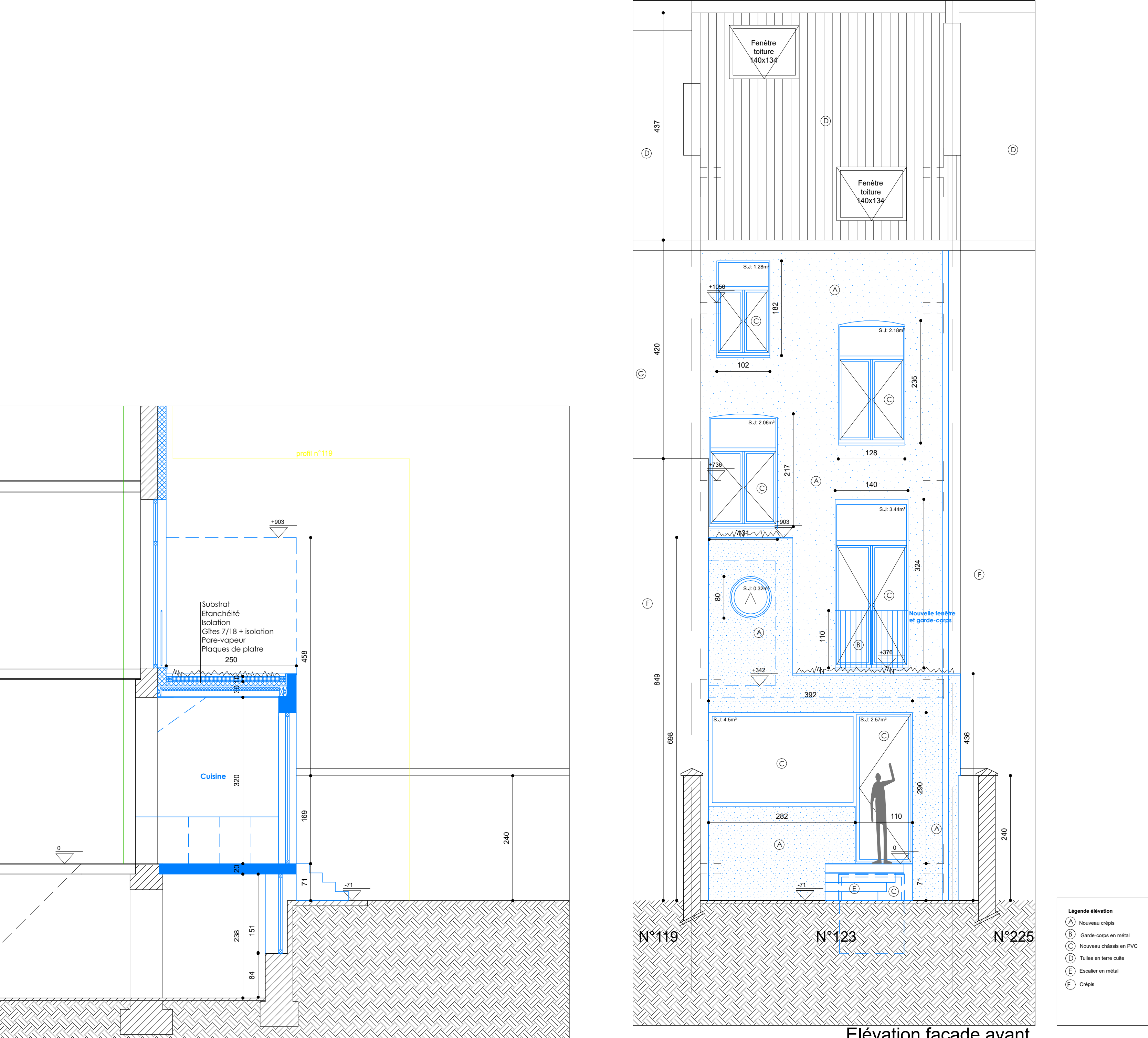
Mezzanine



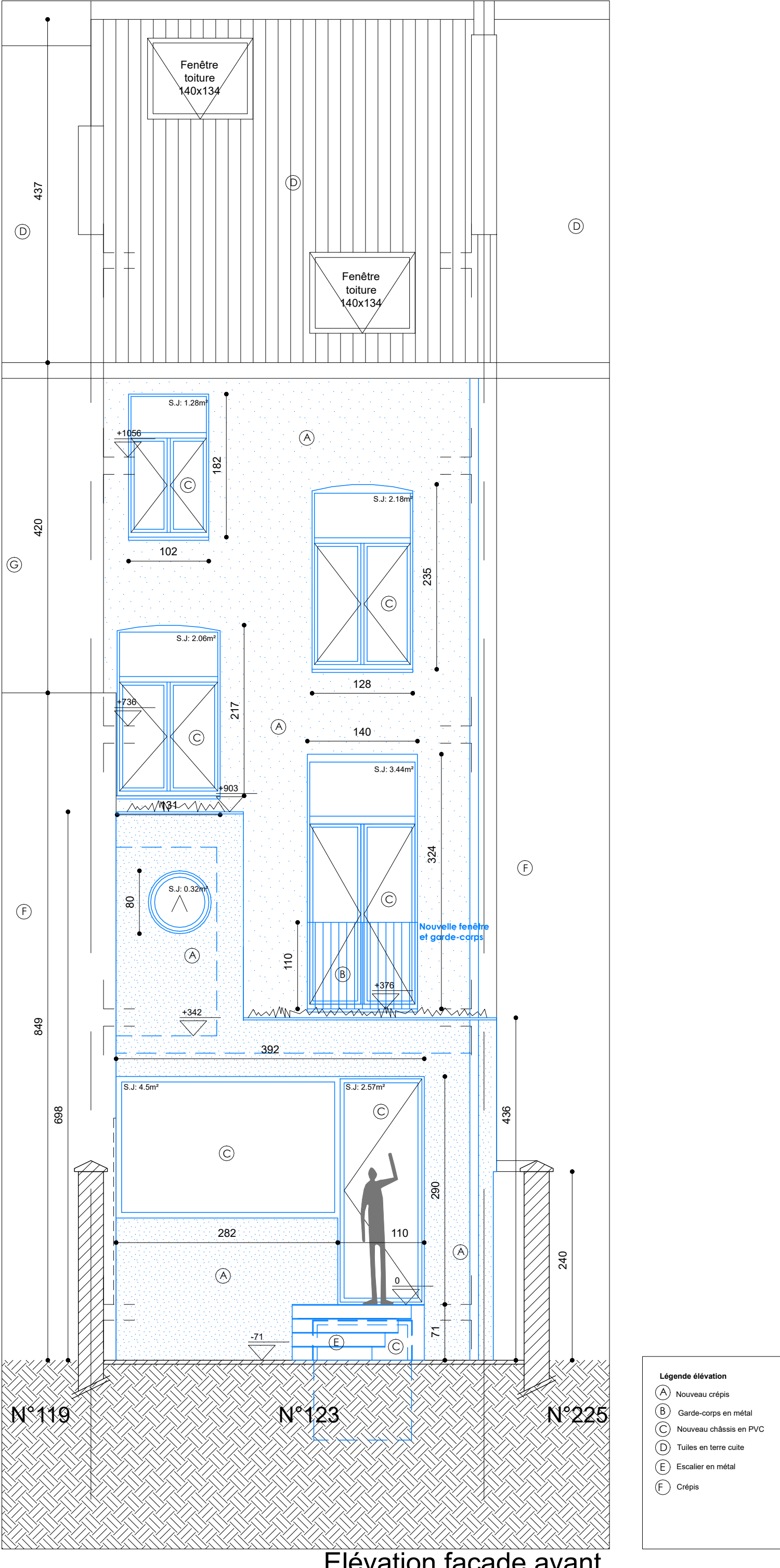
R+3



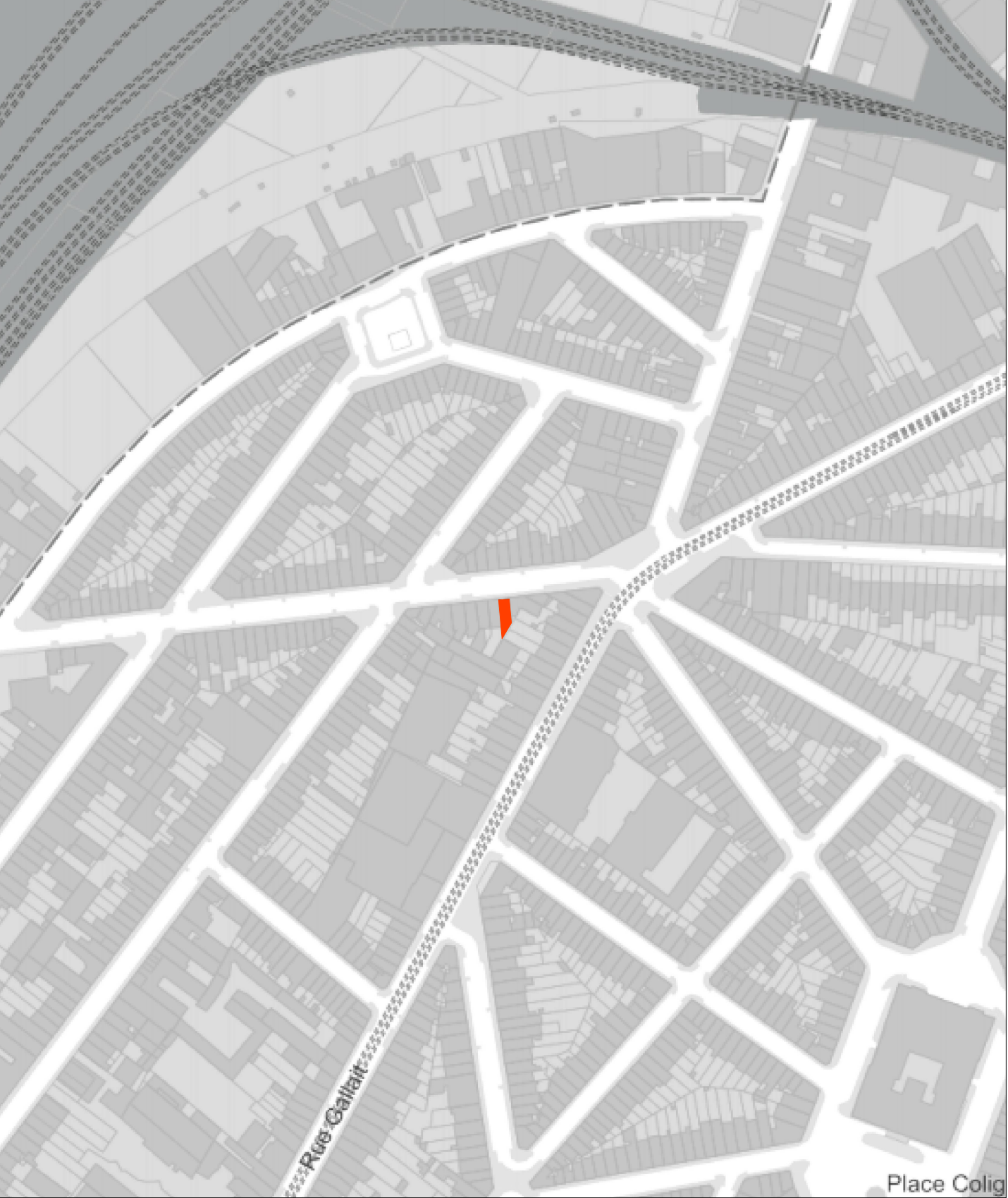
R+2



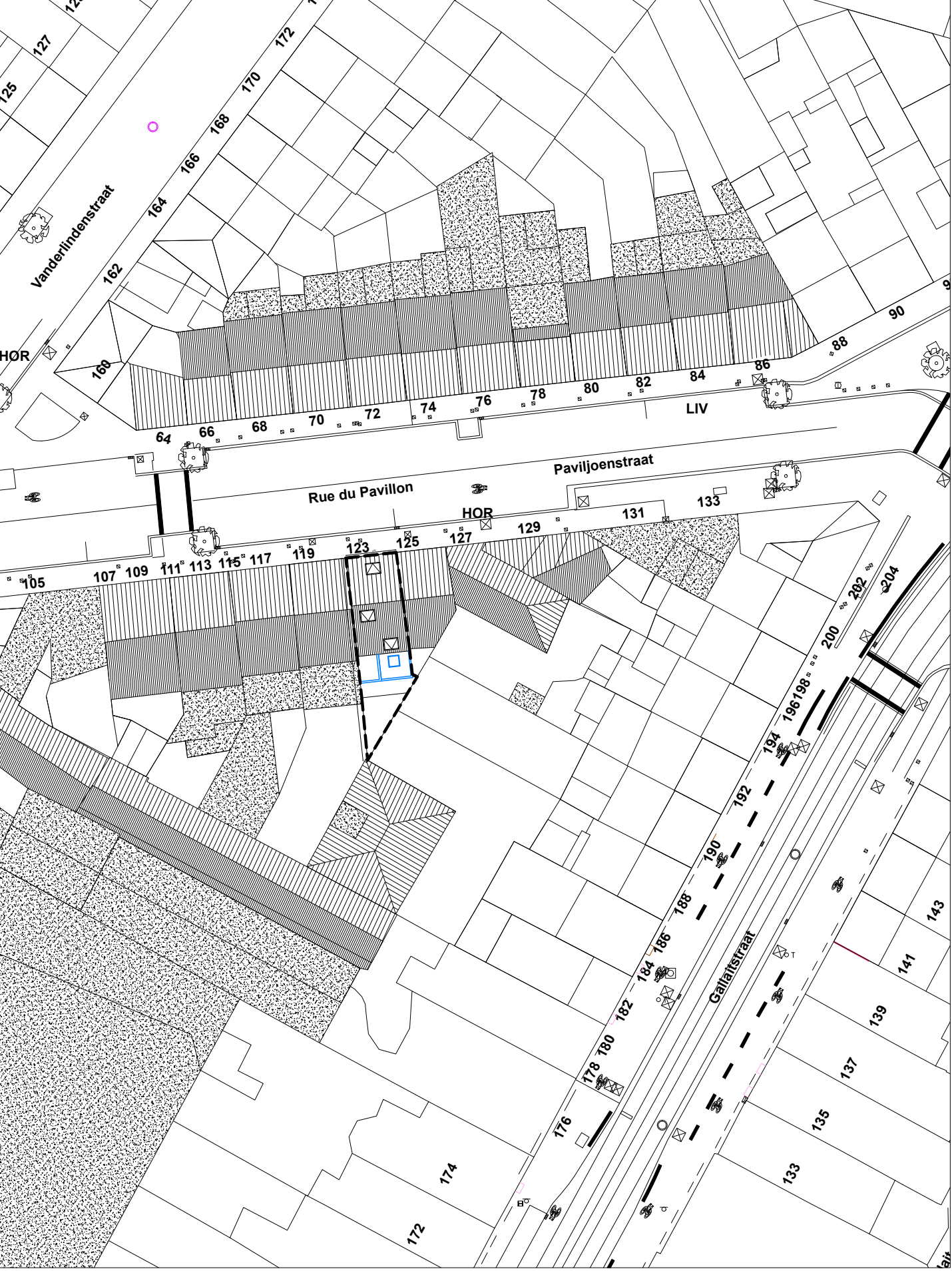
Coupe 2



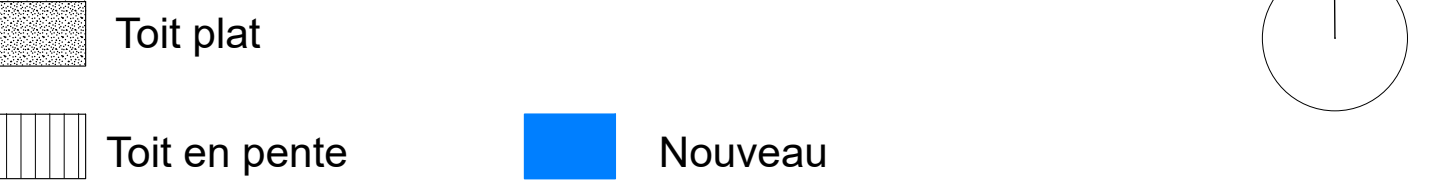
Elévation façade avant



Plan de situation, - éch. 1/2500e



plan d'implantation - éch. 1/500e



PERMIS D'URBANISME

OBJET
Rénovation d'une maison unifamiliale
Rue du Pavillon, 123 1030 Schaerbeek

MAITRE DE L'OUVRAGE

ARCHITECTE
Monsieur Pascal Architectes
42 rue creuse 1030 schaerbeek
02 248 25 57 info@m-architecture.eu

INDICE	TITRE	MODIFICATIONS

TITRE
Situation projetée :
- Plan de situation 1/2500e
- Plan d'implantation 1/500e
- Plans R-1, RDC, R+1, R+2, R+3, mezzanine - éch : 1/50e
- Façade à rue inchangée

PLAN N°
3

DATE
03/12/2025